

# TECHNICAL SPECIFICATIONS

## CONNECTIONS



TOILET



SINK



SHOWER

## APPLICATION



RESIDENTIAL

# Sanipack<sup>®</sup> Macerator

### FULL VIEW OF COMPLETE BATHROOM



Example of installation. Follow local plumbing codes for actual install.

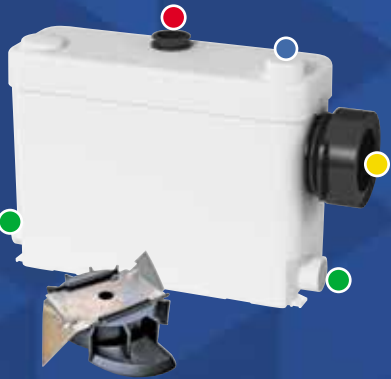
### CLOSE-UP VIEW OF PRODUCT



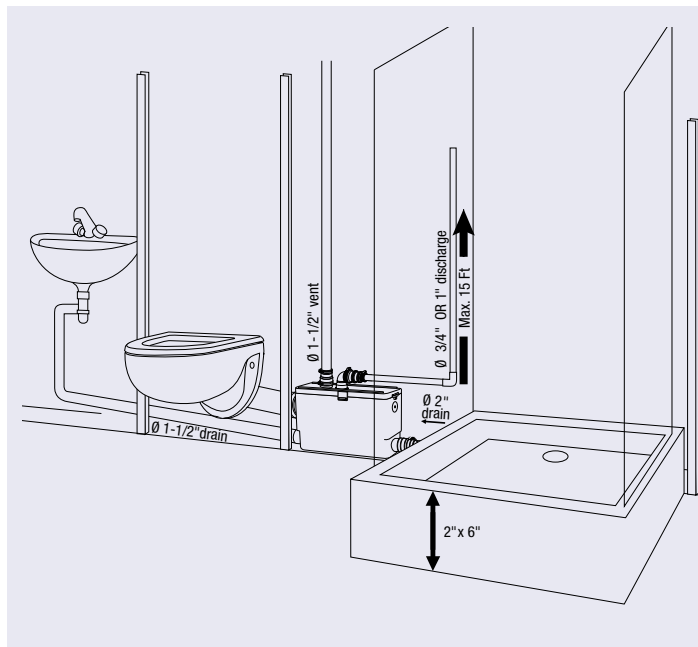
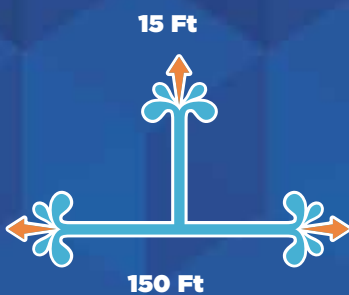
Example of installation. Follow local plumbing codes for actual install.

The **Sanipack is a 1/2 HP pump system** used to install a complete bathroom up to **15 feet below the sewer line, or even up to 150 feet away** from a soil stack. It incorporates **a macerating system** which can handle human waste and toilet paper in residential applications. The blade is made out of a hardened stainless steel material **which eliminates the need for any service or replacement.**

- **Discharges the waste through a 3/4" or 1" rigid pipe. A non-return valve is included** on the discharge elbow assembly provided with the system. This elbow can be rotated 360 degrees depending on the discharge installation.
- Has been designed with a **1-1/2" vent connection** on the top of the lid. All plumbing codes require connection to a vent system. Please note that the vent system should be a two-way air vent as air needs to freely flow both ways. Note: The use of mechanical vents, air admittance valves or similar devices is not permitted.
- This pump is designed to be connected to **any wall-hung toilet** (not supplied by Saniflo). Note that there should be a minimum 1/4" per foot gravity fall on the waste pipe coming from the toilet into the pump.
- Will also discharge gray water from any **sink, shower or urinal**. The wastewater will drain into the system via **two 1-1/2" inlets with built-in check valves** on either side of the housing. Note that when adding a shower, the base should be raised up by a minimum of 6" off the floor.



## PUMPING DISTANCE



### USE ANY WALL-HUNG TOILET TO COMPLETE YOUR BATHROOM INSTALLATION

There are no limitations when it comes to designing your bathroom around the Sanipack (011) system as you can select **any wall-hung toilet of your choice.**

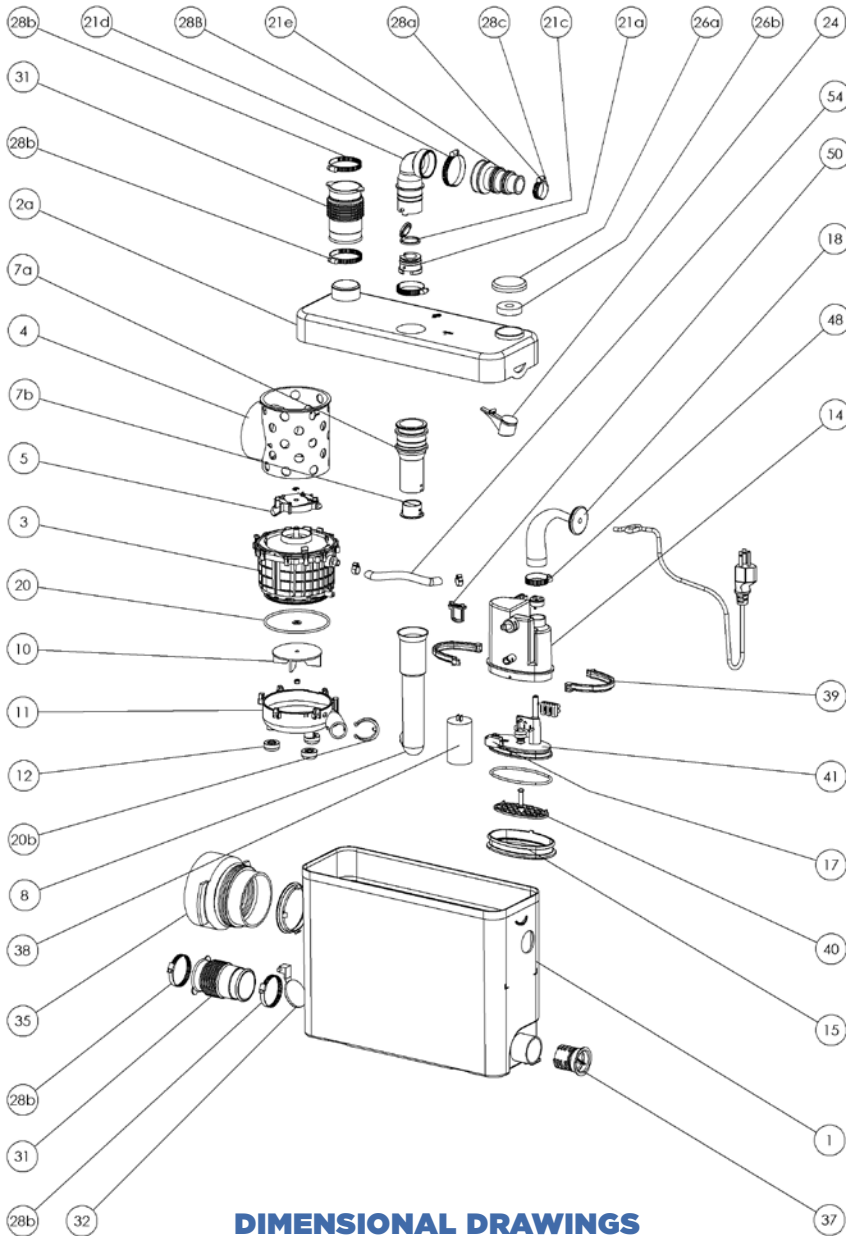
**Mix and match** your fixtures (shower, sink) from other brands to complete your installation.

The macerating system is **easy to conceal as it can be installed behind or even in-between walls.** This type of installation gives you the clean look of a European bathroom.

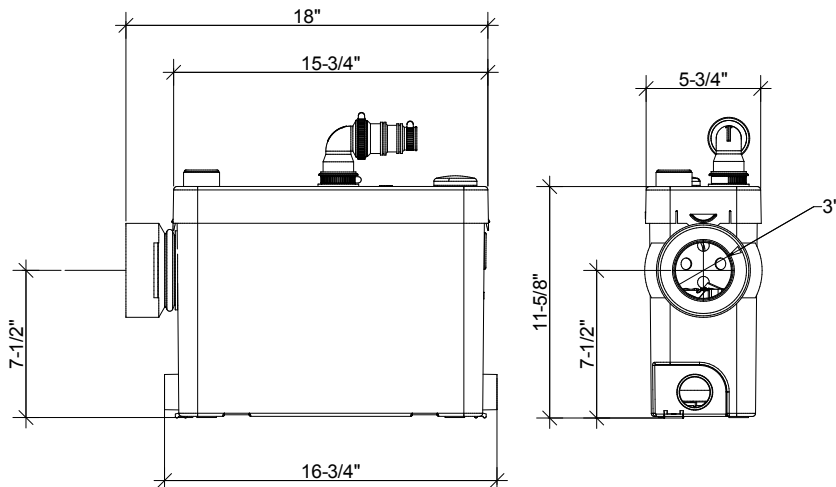


# TECHNICAL SPECIFICATIONS

PLEASE CALL US TOLL-FREE AT  
**800-571-8191 (US) / 800-363-5874 (CDN)**  
 TO PURCHASE PARTS REFERENCED BELOW



## DIMENSIONAL DRAWINGS



Choose any wall-hung toilet, shower or sink and enjoy your dream bathroom.

## TECHNICAL SPECIFICATIONS

**Pump type:**

Macerator

**Electrical:**

110 V - 60 Hz / 4.5 Amps (Max)

**Motor:**

0.5 HP oil-filled thermally protected motor

**Capacitor rating:**

45 microfarad

**Operating Temperature:**

104°F (110°F Max.)

**Power cord length:**

48 inches

**Noise level:**

≤ 53 dBA (Lp) (measured at 3 ft.)

**Discharge pipe diameter:**

3/4" or 1"

**Discharge rate at 15 ft:**

17 GPM

**Discharge rate at 3 ft:**

27 GPM

**Shut-off head:**

30 ft.

**Normal running time:**

Depends on toilet system

**Capacity:**

3.5 gallons / 13.2 liters

**Inlets:**

1-1/2" (sides), 1-1/2" vent (top)

**Method of activation:**

Membrane/microswitch

**Shower/bathtub base height:**

6" min

**Weight:**

17 lbs / 7.7 kg

**Certifying agencies:**

CSA (IPC, NSPC), IAPMO (UPC)

**Recommended accessories:**

Descaler, Sanialarm

**Connections:**

Wall hung toilet, sink, shower

